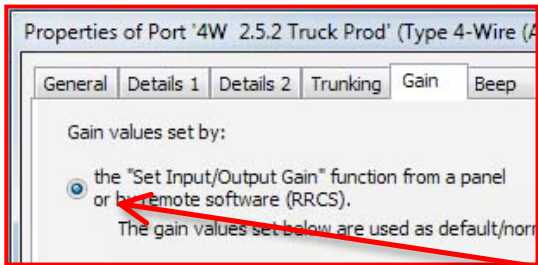


# Pete's Riedel Tips – duplicate 4-wire volume control ident

If you want to have port VC on your panel here is the way I do it and be able to tell which volume needs changing.

One way to do this is to put the 4-wire port on the panel and use the I/O gain control to switch it into gain setting. Be careful that you don't have the Auto reverse option checked in Misc. This will send audio from the 4-wire to your panel and interfere with you hearing it on the party line. **A little known fact is that the volume of a listen to a port or the volume of a P-P in monitor mode takes priority over that port's volume in a party line. This property can be used to subtract or lower one party to a partyline in your panel.**

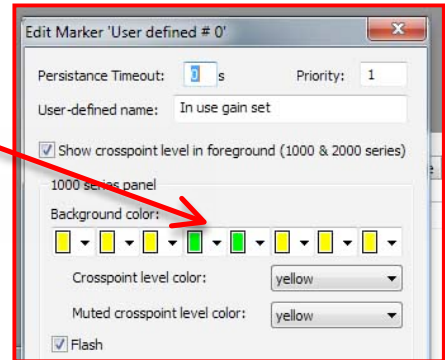
I monitor a VU meter showing the audio in my panel. See "[Setting up your master comms panel](#)" for how I do that. Usually I listen to the party lines and adjust individuals as needed to keep the level the same. It's hard to figure out exactly what port is talking. Sometimes you can determine it by watching the crosspoint view. Panels clearly show which one is talking. This is a way to flash the volume control setting when there is audio coming in.



Some party lines have multiple 4-wire connections such as several BTR systems with the same PL, let's say Production, on channel A. Unless you recognize the users voice or catch it on then Crosspoint View it's hard to determine what port needs adjusting.

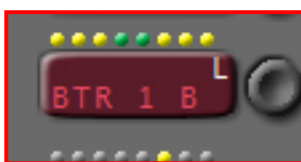
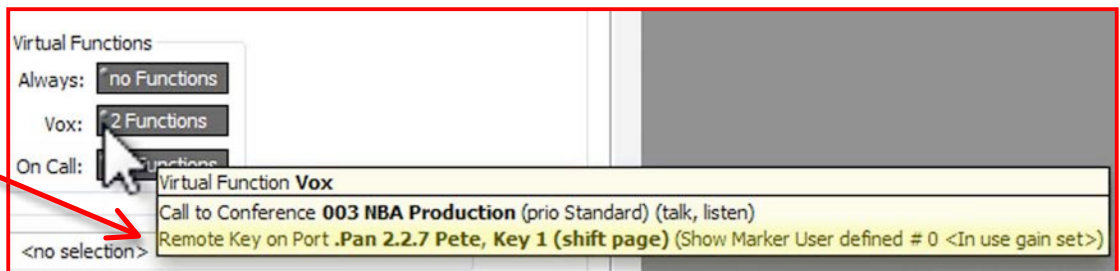
Setup your 4-wire ports to allow external control of the volume for each BTR port interface

In the Marker definitions create a user defined marker much the same as the volume control active but with green in the center and set it to flash and set the priority to 1. Change the name of the marker to In Use Gain set. Set the timeout to 3 sec.



Then on a button for each port, setup control volume. Now we need to create an indicator to show which 4-wire is actually talking.

In the 4-wire connection port add remote key to the VOX connection to show that new marker on the volume control key of your panel. Now when audio comes in that port the correct volume set key will flash.



The volume control will flash like BTR 1B and have a 3 second time out and you can directly grab this VC and adjust it.