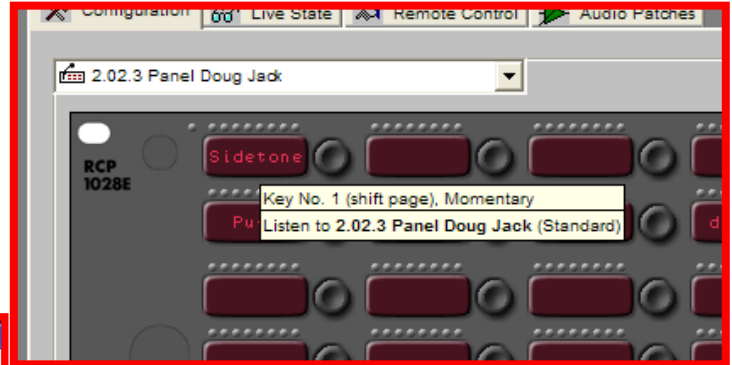
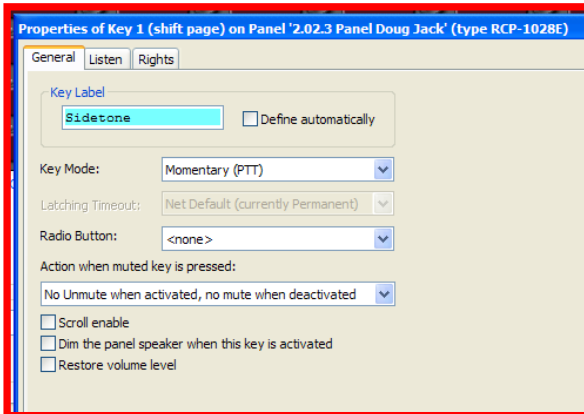


Pete's Riedel Tips

Another way to setup true SIDETONE for Riedel stations.

Sidetone is what you hear of yourself in headphones. On standard US intercom systems, when you turn on your mic to talk, the sidetone gives you some indication that your mic is on since you can hear yourself. If all your talks are off there should be no sidetone. Riedel stations do not have sidetone capability. This is a way to produce it. This station is on port: node 2, card 2, port 3 and is labeled "2.02.3 Panel Doug Jack"

1. Setup a button on the station with a **Listen TO** itself. Make it the top left on the shift page.
2. Name the button "Sidetone", set momentary and check the dim function. This sidetone will be on when the station is in speaker mode and could cause feedback. You may want to increase the speaker dim level in the panel properties to offset this if the station is ever going to be used in speaker mode.



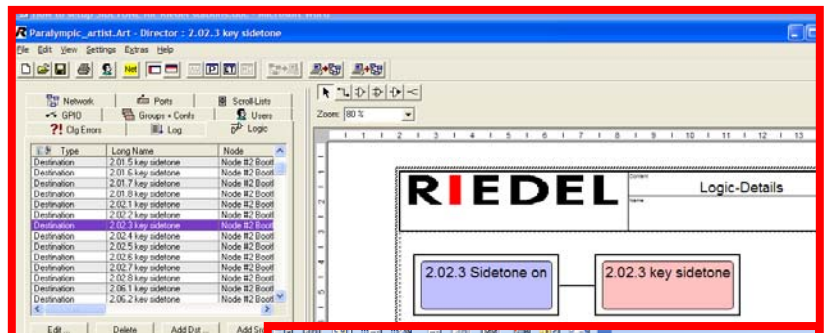
Now, when the sidetone button is pushed you will hear yourself in the headset and your level will be controlled by the listen volume control on the sidetone button.. However, you will hear yourself only when the button is pushed.

Now we need to create a way for every other button on this panel to remotely push this button. We could do it with a remote key function on each button but that is hard to program since it must be done manually for each button. Instead we make it a logic function and

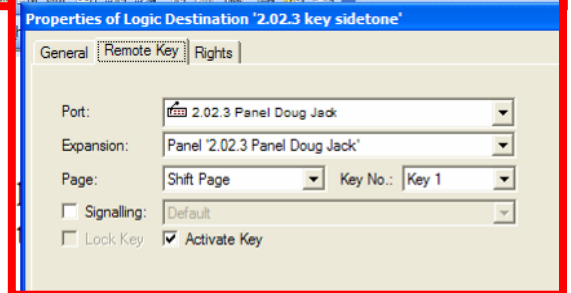
the logic source can be dragged onto any key.

3. Go to the logic tab and create a source called "**2.02.3 Sidetone ON**" and a destination called "**2.02.3 key sidetone**"

4. Double click on the destination "**2.02.3 key sidetone**" to open the logic page. Drag the "**2.02.3 Sidetone ON**" source onto the page. Use the connect line function to connect the two items as shown on the right.



5. Right click on the "**2.02.3 key sidetone**" destination line in the logic panel on the left side of the screen and add function "Remote Key, shift page, Key 1, Activate key". This means that when "**2.02.3 Sidetone on**" source logic (Blue) is true or ON the "**2.02.3 key sidetone**" destination (pink) will be ON which means your sidetone will be ON.



6. Now, open your panel for editing, reselect the logic tab and drag the "**2.02.3 Sidetone ON**" source logic onto every key on that panel that you use to talk. They should already be programmed to talk to and hear for a conference, group or port.

Now, when any talk key is on, your sidetone will also be on. When they are all off, your sidetone will be off. Users can set their own sidetone level on the shift page.